

# NetScreen Security Appliances



**NETSCREEN®**  
Scalable Security Solutions



Not all products shown

## At a glance

- **Multi-function security appliances**

*Integrated security solutions, including stateful inspection firewall, robust DoS mitigation, and high-performance IPSec VPN; reducing the need for expensive add-ons and licensing*

- **High Performance, Purpose-built solutions**

*Integrated solutions for high reliability and maximum protection combined with hardware accelerated firewall, DoS mitigation, and VPN throughput*

- **Easy to deploy and manage**

*Deploy in minutes with built-in management capabilities and policy-based central management using NetScreen-Global PRO*

## Product overview

NetScreen Technologies Inc.'s integrated security appliances are purpose-built network security devices that combine firewall, Virtual Private Networking (VPN), and Denial of Service (DoS) mitigation functions. Utilizing hardware-accelerated security technology, all NetScreen security appliances feature very low latency, high throughput IPSec encryption and firewall functions, and robust DoS mitigation; allowing them to seamlessly integrate into any network.

Installation and management of NetScreen's appliances are easily accomplished via a number of management interfaces including a built-in WebUI, Command Line Interface (CLI), or NetScreen-Global PRO, NetScreen's central management solution.

## NetScreen ScreenOS

NetScreen ScreenOS firmware powers all appliances. At its core is a custom-designed, real time operating system built from the ground up to deliver a very high level of performance and security, eliminating unnecessary software layers and vulnerabilities found in other security products built on general-purpose OS. NetScreen ScreenOS provides an integrated, easy-to-use platform for its many functions, including:

- Common Criteria and ICSA certified stateful inspection firewall
- FIPS 140 and ICSA certified IPSec VPN gateway
- Traffic management capabilities for optimizing limited bandwidth
- High Availability (HA) to ensure maximum network reliability
- Embedded Antivirus using AV technology from Trend Micro – targeted for the second half of 2003\*
- Rich set of management interfaces, both internal and external
- Dynamic routing support to ease integration of security into existing networks and to support dynamically routed VPNs

## Reliability and ease of deployment

The ease of installation and robust manageability of NetScreen's all-in-one security appliances is complemented by its superior reliability and security capability. Without the inherent reliability issues associated with hard disk drives, appliances have proven to be the best long-term solutions when uptime is important. NetScreen appliances only require configuration and management of the firewall, VPN, and DoS features, alleviating the need to configure separate hardware and complex operating systems. This limits the time required to install and maintain the security device and reduces the number of setup steps where security holes are often created.

\*Available only on the NetScreen-5GT. Separate purchase required.

# NetScreen Appliances

## NetScreen-200 Series

The NetScreen-200 Series includes two products, the NetScreen-204 and the NetScreen-208, differentiated by the number of 10/100 interfaces (four and eight respectively) and the firewall throughput. Together, they are two of the most versatile security appliances available today, easily integrated into many different environments, including medium and large enterprise offices, e-business sites, data centers, and carrier infrastructures. Complete with either four or eight auto-speed-sensing, auto-polarity-correcting 10/100 Ethernet ports, the NetScreen-200 Series performs firewall functions at near wire-speed (550 Mbps on the NetScreen-208 and 400 Mbps on the NetScreen-204). Even the most computationally intense applications, such as 3DES and AES encryption, are performed at speeds greater than 200 Mbps. In addition to physical interface density, the NetScreen-200 Series appliances support an optional virtualization key, which includes VLAN support and additional custom security zones and virtual routers.

## NetScreen-50 and NetScreen-25

The NetScreen-50 and NetScreen-25 offer a complete security solution for enterprise branch and remote offices as well as small and medium size companies. Featuring four auto-sensing 10/100 Ethernet ports, the NetScreen-50 and NetScreen-25 provide solutions for perimeter security with multiple DMZs, VPNs for wireless LAN security, or protection of internal networks. The NetScreen-50 is a high performance security appliance, offering 170 Mbps of firewall and 50 Mbps of 3DES or AES VPN performance, with support for 32,000 concurrent sessions, 100 site-to-site VPN tunnels, and 400 VPN users. The NetScreen-25 has the same number of Ethernet interfaces and offers 100 Mbps of firewall and 20 Mbps of 3DES or AES VPN performance, with support for 8,000 concurrent sessions, 25 site-to-site VPN tunnels, and 100 VPN users.

## NetScreen-5XT

Weighing in at less than 2 pounds, the NetScreen-5XT is a feature rich enterprise-class network security solution with one Untrust 10/100 Ethernet port, four Trust 10/100 Ethernet ports, a console port and a modem port. Using the same firewall, VPN, and DoS mitigation technology as NetScreen's high-end central site products, the NetScreen-5XT is fully capable of securing a remote office, retail outlet, or a broadband telecommuter. The NetScreen-5XT supports dial-backup or dual Ethernet ports for redundant Internet connections when network uptime is business critical. Offered in a 10-user version and unrestricted user version, the NetScreen-5XT offers up to 70 Mbps firewall and 20 Mbps of 3DES or AES VPN performance, with support for 2,000 concurrent sessions and 10 VPN tunnels.

## NetScreen-5GT

The NetScreen-5GT provides a cost-effective network security solution for remote offices, retail outlets and telecommuters. Offering one Untrust and four Trust 10/100 Ethernet ports, the NetScreen-5GT uses the same firewall, VPN and DOS mitigation technology as NetScreen's high-end central site products. The NetScreen-5GT is designed to be upgradeable to support embedded virus scanning using Trend Micro AV technology. The upgrade is expected to be available during the second half of 2003 for an additional fee. The NetScreen-5GT is offered in a 10-user version and Plus version. The Plus version enables unrestricted users and support for OSPF, BGP, dual-Untrust and dial-backup. The NetScreen-5GT provides ample performance at 75 Mbps of firewall and 20 Mbps of hardware accelerated 3DES VPN performance, with support for 2,000 concurrent sessions and 10 VPN tunnels.

## NetScreen-5XP

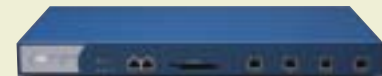
The NetScreen-5XP offers a comprehensive network security solution for telecommuters including one Untrust and one Trust 10 Mbps Ethernet ports. Offered in two versions, the 10-user and unrestricted user (Elite), the NetScreen-5XP provides up to 20 Mbps firewall and 13 Mbps of 3DES VPN performance with support for 2,000 concurrent sessions and 10 VPN tunnels.



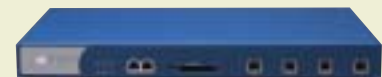
NetScreen-208



NetScreen-204



NetScreen-50



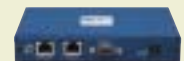
NetScreen-25



NetScreen-5GT



NetScreen-5XT



NetScreen-5XP

## Extending Security to Remote Sites

*In large VPN deployments, a significant challenge is ensuring that remote locations are protected with equally high security as central sites. NetScreen provides solutions to secure large VPNs, including features to secure remote sites, which enable remote users to securely access the Internet directly rather than performing costly backhauling through VPN tunnels.*

- Embedded virus scanning using Trend Micro AV technology provides additional level of security. The AV upgrade is expected to be available for the NetScreen-5GT during the second half of 2003 and will support email scanning (POP3, SMTP, webmail) and web traffic scanning (HTTP)
- Home/work zones on the NetScreen-5XT and NetScreen-5GT provide network segmentation for telecommuter and remote office networks. The work zone provides a secure zone for work activities to access the corporate network via a VPN. Meanwhile PCs in the home zone can get secure access to the Internet but are disallowed from the work zone and corporate network
- XAUTH user authentication and VPN capabilities allow the actual user to be authenticated, not just the remote VPN gateway
- Redundant Untrust interfaces enable a backup Internet connection. Depending on the configuration, this can be done with either a 10/100 Ethernet interface or with an external modem attached to the modem interface. If the primary connection fails, all traffic is directed to the backup connection

## Firewall security

NetScreen's appliance product line provides a comprehensive, scalable security solution, encompassing broadband telecommuters to large corporate offices, e-business sites, and carrier networks. NetScreen's full-featured firewall uses technology based on stateful inspection to protect networks against intruders and DoS attacks. All NetScreen appliances provide:

- Integrated solutions with security-optimized hardware, operating system and firewall, which provides higher level of security than patched together software-based solutions
- Robust attack prevention, independently configurable on every interface, including SYN attack, ICMP flood, and port scan
- Network Address Translation (NAT) and Port Address Translation (PAT)—which hide internal IP addresses
- Transparent mode—where the device functions as a Layer 2 security bridge, providing firewall, VPN, and DoS protections yet with minimal change to the existing network
- Route mode—providing support for networks where address translation is not needed
- NetScreen's ScreenOS is a Common Criteria and ICSA certified stateful inspection firewall

## Denial of Service protection

DoS and Distributed Denial of Service (DDoS) protections require purpose-built solutions that can handle large numbers of packets and new sessions per second. NetScreen's appliances accelerate session setup in hardware, resulting in solutions that are able to protect against DoS and DDoS attacks while continuing to provide service to valid traffic.

- Supported on every interface to provide DoS mitigation against internal threats, such as compromised internal devices launching DoS attacks
- Configurable per security zone, allowing flexible thresholds to be set for each type of DoS attack

## Virtual Private Networks

Integrated into all NetScreen appliances is a full-featured IPSec VPN solution, enabling both site-to-site and remote access VPN applications. Key capabilities include:

- 3DES, DES and AES encryption
- Authentication using digital certificates (PKI X.509), IKE auto-key, or manual key
- SHA-1 and MD5 strong integrity checking
- Support for VPN tunnels on every interface allowing IPSec to secure internal traffic (e.g. a Wireless LAN)

- IPSec NAT traversal to allow VPN tunnels to traverse intervening devices that perform NAT
- Support for mesh and hub-and-spoke VPN networks to provide customers the ability to deploy one architecture, or a hybrid of both, to meet deployment requirements
- Redundant VPN gateways to enable backup tunnel definitions in the event of a failure in a VPN connection
- Tunnel interfaces to allow VPN tunnel selection based on routing decision, providing the best path to be selected and resiliency when there is a failure in the network
- FIPS 140 and ICSA IPSec certified devices

## User authentication

All NetScreen security appliances feature comprehensive user authentication features to control access to network resources. All appliances feature:

- User authentication via external RADIUS, SecurID, or LDAP servers, with support for redundant server definitions
- Internal user database support to alleviate the need for external servers
- Web-based authentication to allow a user to be authenticated to the network via an Internet browser for any service
- XAUTH support to allow authentication of dial-up VPN users in addition to IPSec authentication, to prevent unauthorized users from accessing the network via a compromised device

## Virtualization (VLANs, Virtual Routers, and Security Zones)

The NetScreen-200 Series can be optionally upgraded with a virtualization key to support VLANs and additional Security Zones and Virtual Routers. This virtualization capability provides the ability to extend security functionality further into a switched network and provide for greater levels of network segmentation.

- 802.1q VLAN to create virtual interfaces, which are then treated like physical interfaces
- Virtual Routers to support overlapping IP address subnets, such as partner extranet deployments where there is often overlapping private IP address subnets at each partner's location
- Additional custom Security Zones to allow the segmentation of the network to provide further security and attack containment



# Networking

## Device redundancy (High Availability)

The NetScreen-50 and NetScreen-200 Series provide the most comprehensive security HA solution available in the market today. All firewall sessions and VPN tunnels are synchronized between the HA pair, providing sub-second interruption in the case of device or interface failure.

- Active/Active deployments to allow both devices to pass traffic and stay fully synchronized to provide for higher burst capacity (with the NetScreen-204 and the NetScreen-208)
- Full mesh configuration (with the NetScreen-208) to allow for redundant physical paths in the network and thereby provides maximum resiliency and uptime
- Path monitoring for up to 16 IP addresses to detect upstream or downstream failures in networks that are not directly connected to the NetScreen device

## Dynamic routing

Adding to the multiple levels of device redundancy, the NetScreen appliances integrate support for dynamic routing protocols, including RIP version 2, OSPF and BGP. While not designed for core Internet routing functions, dynamic routing support allows a NetScreen device to integrate with the routing infrastructure for both firewall and VPN functions, providing for increased resiliency and support for multiple ISPs.

- When used in conjunction with tunnel interfaces, multiple VPN tunnels can be defined to a given location. Based on dynamic routing, the optimal VPN tunnel will be used for traffic

- Additional subnets can easily be added to a VPN, requiring less administrative time when networks change
- Supports multiple service providers for redundant Internet connections

Note: Support for OSPF and BGP protocols is not included in the NetScreen-5GT 10-user or NetScreen-5XP version but is available on the NetScreen-5GT Plus version.

## PPPoE and DHCP client/server

All NetScreen appliances may function as a DHCP or PPPoE client, having their Untrusted interface IP address and network parameters set dynamically for ease of integration into networks that utilize these protocols, such as DSL and cable networks. In addition, all NetScreen appliances can act as DHCP servers, automatically assigning IP addresses to hosts on the internal network.

## Graphical WebUI

All NetScreen appliances feature an intuitive graphical interface, the WebUI, accessible through HTTP or HTTPS (SSL). Significantly enhanced with NetScreen ScreenOS 4.0, the WebUI offers an "at-a-glance" home page including a graphical representation of the current device status.

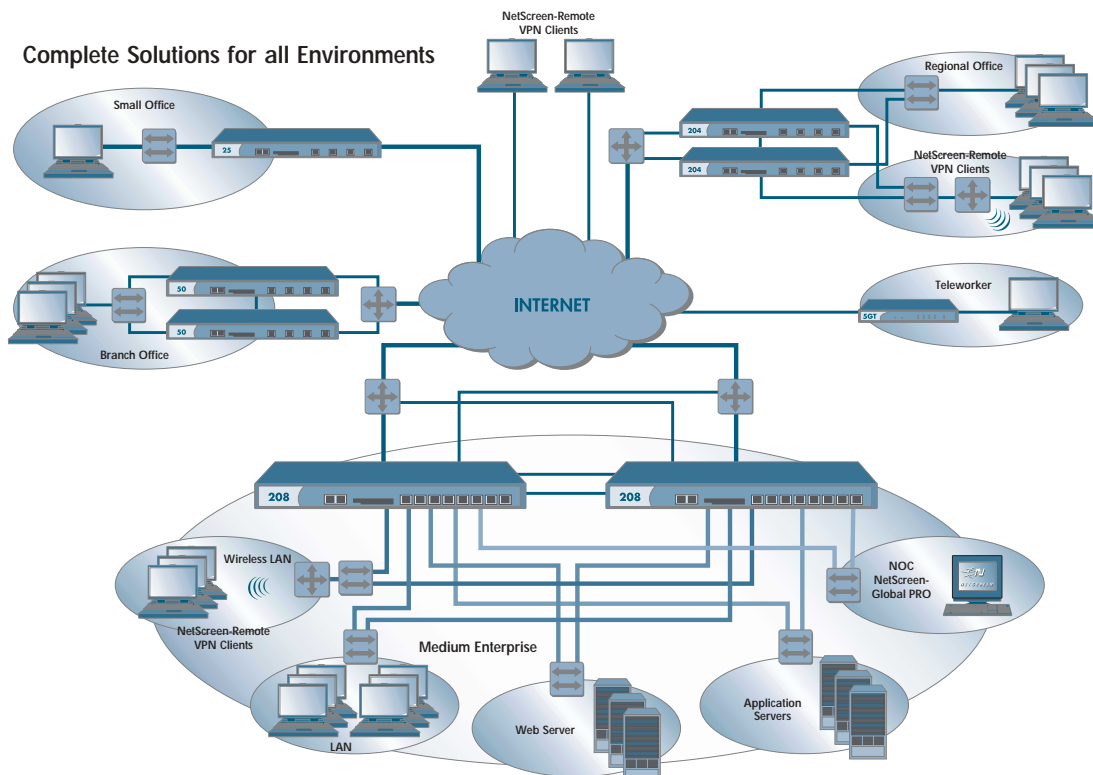
- Dynamic HTML and Java-based menus
- Accessible through HTTP or for added security with HTTPS (SSL)
- Configuration wizards for easy firewall policy and VPN setup
- View events, logs, and device status

## Traffic management

Traffic management enables a network administrator to monitor, analyze, and allocate bandwidth among various types of network traffic in real time, helping to ensure that business-critical traffic is not impacted by other non-critical applications, such as web surfing. Traffic management includes:

- Priority based on IP address/subnet, user, application, or time of day
- Set guaranteed bandwidth and maximum bandwidth
- Up to eight prioritization levels
- Support for industry standard DiffServ packet marking, allowing NetScreen security appliances to signal QoS to other devices

## Complete Solutions for all Environments



Complete security solution for any sized environment, including central management solutions to tie all of the pieces together.

## Command Line Interface

All NetScreen appliances offer a full-featured CLI, accessible through the console port, SSH, or telnet. The CLI supports all device commands, and includes debugging commands, which are helpful when trouble-shooting network problems.

## NetScreen-Global PRO and NetScreen-Global PRO Express

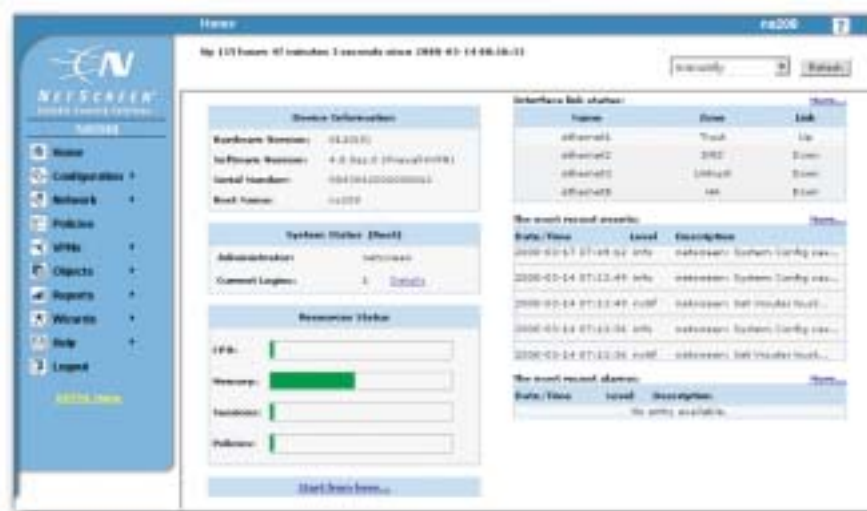
NetScreen-Global PRO and NetScreen-Global PRO Express are NetScreen's central management solutions. The NetScreen-Global PRO line empowers network and security administrators to manage hundreds or thousands of devices. The NetScreen-Global PRO line centrally creates firewall and VPN policies and pushes them to NetScreen products rapidly with its easy-to-use and intuitive policy management capabilities. Multi-administrator/multi-Network Operation Center (NOC) configuration management greatly reduces administration costs while increasing overall policy control. The NetScreen-Global PRO line offers critical fault and performance reporting capabilities. A wide range of informative real time and historical reports can be generated to gain critical insight into usage trends, performance baselines, SLA metrics, and security events for NetScreen integrated security solution deployments. In addition, performance and uptime of VPN networks can be tracked using the VPN monitoring capabilities.

## Easy setup and installation

All NetScreen appliances are designed for easy setup and installation. The integrated design of the NetScreen appliances alleviates the need to install and configure a separate operating system and security software solution. NetScreen's WebUI is easily accessible through an Internet browser, and provides an installation wizard to ease the initial configuration. Simplifying the setup process reduces not only the time required to deploy NetScreen appliances, but also the complexity of the installation, minimizing configuration errors that can open security holes.

## Flexible deployment options

All NetScreen appliances feature many options for deployment into new or existing networks. Route and NAT modes allow NetScreen devices to be deployed with an IP address assigned to each interface. These modes can be assigned to each interface independently, allowing some interfaces to be set to Route mode, such as those connected to servers in the DMZ, and other interfaces can be set to NAT mode, such as those connected to internal network segments. Transparent mode allows a NetScreen appliance to be deployed as a Layer 2 security device, providing firewall, VPN, and DoS functionality. The interfaces in transparent mode do not have IP addresses, which significantly ease deployments into existing networks.



# Appliance Features

| Feature  | NetScreen-200 Series <sup>(1)</sup>            | NetScreen-50 <sup>(1)</sup> | NetScreen-25 <sup>(1)</sup> | NetScreen-5XT <sup>(3)</sup> | NetScreen-5GT <sup>(3)</sup>              | NetScreen-5XP <sup>(1)</sup>             |
|--|--|-----------------------------|-----------------------------|------------------------------|---|--|
| <b>Performance</b>                               |  |                             |                             |                              |   |  |
| Concurrent sessions                              | 128,000  | 32,000                      | 8,000                       | 2,000                        | 2,000                                     | 2,000                                    |
| New sessions/second                              | 13,000   | 7,000                       | 7,000                       | 2,000                        | 2,000                                     | 2,000                                    |
| Firewall performance                             | 400 or 550 Mbps                                | 170 Mbps                    | 100 Mbps                    | 70 Mbps                      | 75 Mbps                                   | 20 Mbps                                  |
| 3DES (168 bit)                                   | 200 Mbps                                       | 50 Mbps                     | 20 Mbps                     | 20 Mbps                      | 20 Mbps                                   | 13 Mbps                                  |
| Policies   | 4,000  | 1,000                       | 500                         | 100                          | 100                                       | 100                                      |
| Interfaces                                       | 4 or 8 10/100 Base-T                           | 4 10/100 Base-T             | 4 10/100 Base-T             | 5 10/100 Base-T              | 5 10/100 Base-T                           | 1 10 Base-T Untrust<br>1 10 Base-T Trust |
| <b>Virtualization</b>                            |  |                             |                             |                              |   |  |
| Maximum number of Security Zones                 | 8 default, 18 maximum with virtualization key  | 4 user definable            | 4 user definable            | 2 (3 w/home/work zones)      | 2 (3 w/home/work zones)                   | 2  |
| Maximum number of Virtual Routers                | 2 default, 7 maximum with virtualization key   | 2                           | 2                           | 2                            | 2   | 2  |
| Maximum number of VLANs                          | 0 default, up to 32 with virtualization key    | 0                           | 0                           | 0                            | 0   | 0  |
| <b>Mode of Operation</b>                         |  |                             |                             |                              |   |  |
| Transparent mode (all interfaces)                | Yes  | Yes                         | Yes                         | Yes                          | Yes                                       | Yes                                      |
| Route mode (all interfaces)                      | Yes  | Yes                         | Yes                         | Yes                          | Yes                                       | Yes                                      |
| NAT (Network Address Translation)                | Yes  | Yes                         | Yes                         | Yes                          | Yes                                       | Yes                                      |
| Home/work zones                                  | No   | No                          | No                          | Yes                          | Yes                                       | No                                       |
| Policy-based NAT                                 | Yes  | Yes                         | Yes                         | Yes                          | Yes                                       | Yes                                      |
| PAT (Port Address Translation)                   | Yes  | Yes                         | Yes                         | Yes                          | Yes                                       | Yes                                      |
| Virtual IP                                       | 4  | 2                           | 2                           | 1                            | 1   | 1  |
| Mapped IP  | 4,000  | 1,000                       | 500                         | 100                          | 100                                       | 100                                      |
| Users per port, Trusted                          | Unrestricted                                   | Unrestricted                | Unrestricted                | 10 or Unrestricted           | 10 or Unrestricted                        | 10 or Unrestricted                       |
| <b>Routing</b>                                   |  |                             |                             |                              |   |  |
| OSPF/BGP dynamic routing                         | Yes, up to 7 instances with virtualization key | Yes, up to 2 instances ea.  | Yes, up to 2 instances ea.  | Yes, up to 2 instances ea.   | Yes, up to 2 instances ea. <sup>(2)</sup> | No                                       |
| Routes   | 4,000  | 2,000                       | 2,000                       | 1,000                        | 1,000                                     | 1,000                                    |
| <b>IP Address Assignment</b>                     |  |                             |                             |                              |   |  |
| Static   | Yes  | Yes                         | Yes                         | Yes                          | Yes                                       | Yes                                      |
| DHCP client                                      | Untrusted interface                            | Untrusted interface         | Untrusted interface         | Untrusted interface          | Untrusted interface                       | Untrusted interface                      |
| PPPoE client                                     | Untrusted interface                            | Untrusted interface         | Untrusted interface         | Untrusted interface          | Untrusted interface                       | Untrusted interface                      |
| Internal DHCP server                             | Interfaces in Trust Zone                       | Interfaces in Trust Zone    | Interfaces in Trust Zone    | All zones but Untrusted      | All zones but Untrusted                   | Interfaces in Trust zone                 |
| DHCP relay                                       | Yes  | Yes                         | Yes                         | Yes                          | Yes                                       | Yes                                      |
| <b>Network Attack Protections</b>                |  |                             |                             |                              |   |  |
| Number of attacks detected                       | 31   | 31                          | 31                          | 31                           | 31  | 31                                       |
| DoS and DDoS protections                         | Yes  | Yes                         | Yes                         | Yes                          | Yes                                       | Yes                                      |
| TCP reassembly for fragmented attack protection  | Yes  | Yes                         | Yes                         | Yes, with ScreenOS 4.0.1     | Yes                                       | Yes                                      |
| Malformed packet protections                     | Yes  | Yes                         | Yes                         | Yes                          | Yes                                       | Yes                                      |
| Malicious URL protections                        | Yes  | Yes                         | Yes                         | Yes                          | Yes                                       | Yes                                      |
| Network attack protections configurable per zone | Yes  | Yes                         | Yes                         | Yes                          | Yes                                       | Yes                                      |
| <b>VPN</b>                                       |  |                             |                             |                              |   |  |
| Site-to-site VPN tunnels                         | 1,000  | 100                         | 25                          | 10                           | 10  | 10                                       |
| Remote access VPN tunnels                        | 1,000  | 400                         | 100                         | 10                           | 10  | 10                                       |
| Manual Key, IKE, PKI (X.509)                     | Yes  | Yes                         | Yes                         | Yes                          | Yes                                       | Yes                                      |
| DES (56 bit), 3DES (168 bit) and AES encryption  | Yes  | Yes                         | Yes                         | Yes                          | Yes                                       | Yes                                      |
| Perfect forward secrecy (DH Groups)              | 1,2,5  | 1,2,5                       | 1,2,5                       | 1,2,5                        | 1,2,5                                     | 1,2,5                                    |
| Prevent replay attack                            | Yes  | Yes                         | Yes                         | Yes                          | Yes                                       | Yes                                      |
| L2TP within IPSec                                | Yes  | Yes                         | Yes                         | Yes                          | Yes                                       | Yes                                      |
| Star (hub and spoke) VPN network topology        | Yes  | Yes                         | Yes                         | Yes                          | Yes                                       | Yes                                      |
| IPSec NAT traversal                              | Yes  | Yes                         | Yes                         | Yes                          | Yes                                       | Yes                                      |
| Tunnel interfaces                                | 256  | 50                          | 25                          | 10                           | 10  | 10                                       |
| Redundant VPN gateway                            | Yes  | Yes                         | Yes                         | Yes                          | Yes                                       | Yes                                      |
| <b>IPSec Authentication</b>                      |  |                             |                             |                              |   |  |
| SHA-1  | Yes  | Yes                         | Yes                         | Yes                          | Yes                                       | Yes                                      |
| MD5  | Yes  | Yes                         | Yes                         | Yes                          | Yes                                       | Yes                                      |
| PKI certificate requests (PKCS 7 and PKCS 10)    | Yes  | Yes                         | Yes                         | Yes                          | Yes                                       | Yes                                      |
| Automated certificate enrollment (SCEP)          | Yes  | Yes                         | Yes                         | Yes                          | Yes                                       | Yes                                      |
| Online Certificate Status Protocol (OCSP)        | Yes  | Yes                         | Yes                         | Yes                          | Yes                                       | Yes                                      |
| <b>Firewall and VPN User Authentication</b>      |  |                             |                             |                              |   |  |
| Built-in (internal) database - user limit        | 1,500  | 500                         | 250                         | 100                          | 100                                       | 100                                      |
| RADIUS (external) database                       | Yes  | Yes                         | Yes                         | Yes                          | Yes                                       | Yes                                      |
| RSA SecurID (external) database                  | Yes  | Yes                         | Yes                         | Yes                          | Yes                                       | Yes                                      |
| LDAP (external) database                         | Yes  | Yes                         | Yes                         | Yes                          | Yes                                       | Yes                                      |
| RADIUS authentication accounting                 | Yes  | Yes                         | Yes                         | Yes                          | Yes                                       | Yes                                      |
| XAUTH VPN authentication                         | Yes  | Yes                         | Yes                         | Yes                          | Yes                                       | Yes                                      |
| Web-based authentication                         | Yes  | Yes                         | Yes                         | Yes                          | Yes                                       | Yes                                      |

# Appliance Features

| Feature  | NetScreen-200 Series <sup>(1)</sup> | NetScreen-50 <sup>(1)</sup> | NetScreen-25 <sup>(1)</sup> | NetScreen-5XT <sup>(3)</sup>                     | NetScreen-5GT <sup>(5)</sup>                   | NetScreen-5XP <sup>(5)</sup>                      |
|--|-------------------------------------|-----------------------------|-----------------------------|--|--|---|
| <b>Traffic Management</b>                      |                                     |                             |                             |  |  |   |
| Guaranteed bandwidth                           | Yes                                 | Yes                         | Yes                         | Yes  | Yes  | Yes   |
| Maximum bandwidth                              | Yes                                 | Yes                         | Yes                         | Yes  | Yes  | Yes   |
| Priority bandwidth utilization                 | Yes                                 | Yes                         | Yes                         | Yes  | Yes  | Yes   |
| DiffServ stamp                                 | Yes                                 | Yes                         | Yes                         | Yes  | Yes  | Yes   |
| <b>High Availability (HA)</b>                  |                                     |                             |                             |  |  |   |
| Active/Active or Active/Passive HA with NSRPv2 | Yes                                 | Active/Passive              | No                          | No   | No   | No  |
| Redundant interfaces                           | Yes                                 | Yes                         | No                          | Dial Backup & Dual Untrust                       | Dial Backup & Dual Untrust <sup>(2)</sup>      | No  |
| Session synchronization for firewall & VPN     | Yes                                 | Yes                         | No                          | No   | No   | No  |
| Device failure detection                       | Yes                                 | Yes                         | No                          | No   | No   | No  |
| Link failure detection                         | Yes                                 | Yes                         | No                          | Yes  | Yes <sup>(2)</sup>                             | No  |
| Network notification on fail-over              | Yes                                 | Yes                         | No                          | No   | No   | No  |
| Authentication for new HA members              | Yes                                 | Yes                         | No                          | No   | No   | No  |
| Encryption of HA traffic                       | Yes                                 | Yes                         | No                          | No   | No   | No  |
| <b>System Management</b>                       |                                     |                             |                             |  |  |   |
| NetScreen-Global PRO                           | Yes                                 | Yes                         | Yes                         | Yes <sup>(4)</sup>                               | Yes <sup>(6)</sup>                             | Yes   |
| NetScreen-Global PRO Express                   | Yes                                 | Yes                         | Yes                         | Yes <sup>(4)</sup>                               | Yes <sup>(6)</sup>                             | Yes   |
| WebUI (HTTP and HTTPS)                         | Yes                                 | Yes                         | Yes                         | Yes  | Yes  | Yes   |
| Command Line Interface (console)               | Yes                                 | Yes                         | Yes                         | Yes  | Yes  | Yes   |
| Command Line Interface (telnet)                | Yes                                 | Yes                         | Yes                         | Yes  | Yes  | Yes   |
| Secure Command Shell (SSH v1.5 compatible)     | Yes                                 | Yes                         | Yes                         | Yes  | Yes  | Yes   |
| All management via VPN tunnel on any interface | Yes                                 | Yes                         | Yes                         | Yes  | Yes  | Yes   |
| SNMP full custom MIB                           | Yes                                 | Yes                         | Yes                         | Yes  | Yes  | Yes   |
| <b>Administration</b>                          |                                     |                             |                             |  |  |   |
| Local administrator database                   | 20                                  | 20                          | 20                          | 20   | 20   | 20  |
| External administrator database                | RADIUS/LDAP/SecurID                 | RADIUS/LDAP/SecurID         | RADIUS/LDAP/SecurID         | RADIUS/LDAP/SecurID                              | RADIUS/LDAP/SecurID                            | RADIUS/LDAP/SecurID                               |
| Restricted administrative networks             | 6                                   | 6                           | 6                           | 6  | 6  | 6   |
| Root admin, admin, and read only user levels   | Yes                                 | Yes                         | Yes                         | Yes  | Yes  | Yes   |
| Software upgrades and config changes           | TFTP/WebUI/Global                   | TFTP/WebUI/Global           | TFTP/WebUI/Global           | TFTP/WebUI/Global                                | TFTP/WebUI/Global                              | TFTP/WebUI/Global                                 |
| Schedules                                      | 256                                 | 256                         | 256                         | 256  | 256  | 256   |
| <b>Logging/Monitoring</b>                      |                                     |                             |                             |  |  |   |
| Syslog   | External                            | External                    | External                    | External   | External                                       | External  |
| E-mail (2 addresses)                           | Yes                                 | Yes                         | Yes                         | Yes  | Yes  | Yes   |
| NetIQ WebTrends                                | External                            | External                    | External                    | External   | External                                       | External  |
| SNMP   | Yes                                 | Yes                         | Yes                         | Yes  | Yes  | Yes   |
| Traceroute                                     | Yes                                 | Yes                         | Yes                         | Yes  | Yes  | Yes   |
| VPN tunnel monitor                             | Yes                                 | Yes                         | Yes                         | Yes  | Yes  | Yes   |
| Websense URL filtering (external)              | Yes                                 | Yes                         | Yes                         | Yes  | Yes  | Yes   |
| <b>External Flash</b>                          |                                     |                             |                             |  |  |   |
| CompactFlash™                                  | 96 or 512 MB options                | 96 or 512 MB options        | 96 or 512 MB options        | No   | No   | No  |
| PCMCIA Flash                                   | No                                  | No                          | No                          | No   | No   | No  |
| Event logs and alarms                          | Yes                                 | Yes                         | Yes                         | No   | No   | No  |
| System config script                           | Yes                                 | Yes                         | Yes                         | No   | No   | No  |
| ScreenOS software                              | Yes                                 | Yes                         | Yes                         | No   | No   | No  |
| <b>Dimensions and Power</b>                    |                                     |                             |                             |  |  |   |
| Height   | 1.73 inches                         | 1.73 inches                 | 1.73 inches                 | 1.25 inches                                      | 1 inch   | 1.25 inches                                       |
| Width  | 17.5 inches                         | 17.5 inches                 | 17.5 inches                 | 8 inches   | 8.25 inches                                    | 6 inches  |
| Depth  | 10.8 inches                         | 10.8 inches                 | 10.8 inches                 | 5 inches   | 5 inches                                       | 5 inches  |
| Weight   | 8 lbs.                              | 8 lbs.                      | 8 lbs.                      | 1.5 lbs.   | 1 lb.  | 1 lb.   |
| Rack mountable                                 | Yes                                 | Yes                         | Yes                         | Yes, with separate kit                           | Yes, with separate kit                         | Yes, with separate kit                            |
| Power Supply (AC)                              | 90 to 264 VAC, 45 W                 | 90 to 264 VAC, 45 W         | 90 to 264 VAC, 45 W         | 12 VDC, 12 W<br>90 to 264 VAC<br>to power supply | 12 VDC, 12 W<br>with regional<br>linear supply | 12 VDC, 7.5 W<br>90 to 264 VAC<br>to power supply |
| Power Supply (DC)                              | -36 to -72 VDC, 50 W                | -36 to -72 VDC, 50 W        | -36 to -72 VDC, 50 W        | N/A  | N/A  | N/A   |

**Certificate Authorities Supported: VeriSign CA, Entrust CA, Microsoft CA, RSA Keon CA, iPlanet (Netscape) CA, Baltimore CA, DOD PKI CA**

(1) Performance, capacity, and features provided with NetScreen ScreenOS 4.0.2r1. May vary with other NetScreen ScreenOS releases.

(2) Requires NetScreen-5GT Plus version, not supported with 10 user version

(3) Performance, capacity, and features provided with NetScreen ScreenOS 4.0.0-DIAL.r1. May vary with other NetScreen ScreenOS releases.

(4) NetScreen-Global PRO and NetScreen-Global PRO Express currently supported with ScreenOS 4.0.0.

(5) Performance, capacity, and features provided with NetScreen ScreenOS 4.0.0-DIAL2. May vary with other NetScreen ScreenOS releases

(6) NetScreen-Global PRO support planned for mid-May 2003 and will not support dial backup, dual Untrust, OSPF, BGP and home/work zones.

These features will be supported in a following release.

# Specifications and Ordering Information

## Specifications:

### Standards supported

ARP, TCP/IP, UDP, ICMP, HTTP, RADIUS, LDAP, SecurID, IPSec (ESP, AH), MD5, SHA-1, AES, DES, 3DES, L2TP, IKE (ISAKMP), TFTP (client), SNMP, X.509 v3, DHCP, PPPoE, SCEP, OSCP, 802.1q

### Safety Certifications

UL, CUL, CSA, CB, NEBS Level 3\*\*

\*\*NetScreen-208 with DC power

### EMC Certifications

*NetScreen-5GT, NetScreen-5XP and NetScreen-5XT:*

FCC class B, BSMI, CE class B, C-Tick, VCCI class B

*NetScreen-25, NetScreen-50,*

*NetScreen-200 Series:*

FCC class A, BSMI, CE class A, C-Tick, VCCI class A

### Environment

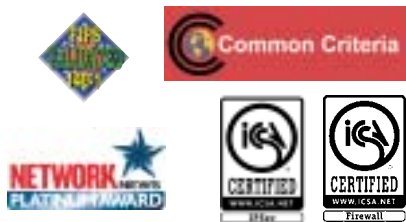
Operational Temperature: 23 to 122°F, -5 to 50° C

Non-Operational Temperature: -4 to 158° F, -20 to 70° C

Humidity: 10-90%, non-condensing

### MTBF (Bellcore model)

NetScreen-5GT: 8.5 years  
 NetScreen-5XP: 8.8 years  
 NetScreen-5XT: 8.5 years  
 NetScreen-25: 8.1 years  
 NetScreen-50: 8.1 years  
 NetScreen-204: 6.8 years  
 NetScreen-208: 6.5 years



805 11th Avenue • Building 3  
 Sunnyvale, California 94089  
 Phone: 408.543.2100 • Fax: 408.543.8200  
[www.netscreen.com](http://www.netscreen.com)

## Ordering information:

### Product

### Part Number

#### NetScreen-208 w/AC power supply

|               |                   |            |
|---------------|-------------------|------------|
| NetScreen-208 | US power cord     | NS-208-001 |
| NetScreen-208 | UK power cord     | NS-208-003 |
| NetScreen-208 | Europe power cord | NS-208-005 |
| NetScreen-208 | Japan power cord  | NS-208-007 |

#### NetScreen-208 w/DC power supply

|               |               |
|---------------|---------------|
| NetScreen-208 | NS-208-001-DC |
|---------------|---------------|

#### NetScreen-204 w/AC power supply

|                 |                   |            |
|-----------------|-------------------|------------|
| NetScreen-204   | US power cord     | NS-204-001 |
| NetScreen-204f* | US power cord     | NS-204-101 |
| NetScreen-204   | UK power cord     | NS-204-003 |
| NetScreen-204f* | UK power cord     | NS-204-103 |
| NetScreen-204   | Europe power cord | NS-204-005 |
| NetScreen-204f* | Europe power cord | NS-204-105 |
| NetScreen-204   | Japan power cord  | NS-204-007 |
| NetScreen-204f* | Japan power cord  | NS-204-107 |

#### NetScreen-204 w/DC power supply

|               |               |
|---------------|---------------|
| NetScreen-204 | NS-204-001-DC |
|---------------|---------------|

#### NetScreen-200 Series Virtualization

|                                  |             |
|----------------------------------|-------------|
| NetScreen-200 Virtualization Key | NS-200-VIRT |
|----------------------------------|-------------|

Virtualization Key supports 32 VLANs, five additional Virtual Routers, and 10 additional Security Zones. Only available with ScreenOS 4.0.2 and later.

#### NetScreen-50 w/AC power supply

|                |                   |            |
|----------------|-------------------|------------|
| NetScreen-50   | US power cord     | NS-050-001 |
| NetScreen-50f* | US power cord     | NS-050-101 |
| NetScreen-50   | UK power cord     | NS-050-003 |
| NetScreen-50f* | UK power cord     | NS-050-103 |
| NetScreen-50   | Europe power cord | NS-050-005 |
| NetScreen-50f* | Europe power cord | NS-050-105 |
| NetScreen-50   | Japan power cord  | NS-050-007 |
| NetScreen-50f* | Japan power cord  | NS-050-107 |

#### NetScreen-50 w/DC power supply

|              |               |
|--------------|---------------|
| NetScreen-50 | NS-050-001-DC |
|--------------|---------------|

#### NetScreen-25

|              |                   |            |
|--------------|-------------------|------------|
| NetScreen-25 | US power cord     | NS-025-001 |
| NetScreen-25 | UK power cord     | NS-025-003 |
| NetScreen-25 | Europe power cord | NS-025-005 |
| NetScreen-25 | Japan power cord  | NS-025-007 |

\* "f" products do not include VPN functionality (international only)

#### NetScreen-5XT 10-user

|               |                   |            |
|---------------|-------------------|------------|
| NetScreen-5XT | US power cord     | NS-5XT-001 |
| NetScreen-5XT | UK power cord     | NS-5XT-003 |
| NetScreen-5XT | Europe power cord | NS-5XT-005 |
| NetScreen-5XT | Japan power cord  | NS-5XT-007 |

|   |            |
|---|------------|
| Upgrade from NetScreen-5XT 10-user to NetScreen-5XT Elite | NS-5XT-ELU |
|---|------------|

#### NetScreen-5XT Elite (unrestricted users)

|                                     |                   |            |
|-------------------------------------|-------------------|------------|
| NetScreen-5XT Elite                 | US power cord     | NS-5XT-101 |
| NetScreen-5XT Elite                 | UK power cord     | NS-5XT-103 |
| NetScreen-5XT Elite                 | Europe power cord | NS-5XT-105 |
| NetScreen-5XT Elite                 | Japan power cord  | NS-5XT-107 |
| Rack mount kit for 2 NetScreen-5XTs | NS-5XT-RMK        |            |

### Product

### Part Number

#### NetScreen-5GT 10-user

|               |                                    |            |
|---------------|------------------------------------|------------|
| NetScreen-5GT | US linear supply                   | NS-5GT-001 |
| NetScreen-5GT | UK linear supply                   | NS-5GT-003 |
| NetScreen-5GT | Europe linear supply               | NS-5GT-005 |
| NetScreen-5GT | Japan linear supply                | NS-5GT-007 |
| NetScreen-5GT | Switching supply and US power cord | NS-5GT-008 |

|  |            |
|--|------------|
| Upgrade from NetScreen-5GT 10-user to NetScreen-5GT Plus | NS-5GT-PLU |
|--|------------|

#### NetScreen-5GT Plus (unrestricted users)

|                                     |                                    |            |
|-------------------------------------|------------------------------------|------------|
| NetScreen-5GT Plus                  | US linear supply                   | NS-5GT-101 |
| NetScreen-5GT Plus                  | UK linear supply                   | NS-5GT-103 |
| NetScreen-5GT Plus                  | Europe linear supply               | NS-5GT-105 |
| NetScreen-5GT Plus                  | Japan linear supply                | NS-5GT-107 |
| NetScreen-5GT Plus                  | Switching supply and US power cord | NS-5GT-108 |
| Rack mount kit for 2 NetScreen-5GTs | NS-5GT-RMK                         |            |

#### NetScreen-5XP 10-user

|               |                   |            |
|---------------|-------------------|------------|
| NetScreen-5XP | US power cord     | NS-5XP-001 |
| NetScreen-5XP | UK power cord     | NS-5XP-003 |
| NetScreen-5XP | Europe power cord | NS-5XP-005 |
| NetScreen-5XP | Japan power cord  | NS-5XP-007 |

|   |            |
|---|------------|
| Upgrade from NetScreen-5XP 10-user to NetScreen-5XP Elite | NS-5XP-ELU |
|---|------------|

#### NetScreen-5XP Elite (unrestricted users)

|                                     |                   |            |
|-------------------------------------|-------------------|------------|
| NetScreen-5XP Elite                 | US power cord     | NS-5XP-101 |
| NetScreen-5XP Elite                 | UK power cord     | NS-5XP-103 |
| NetScreen-5XP Elite                 | Europe power cord | NS-5XP-105 |
| NetScreen-5XP Elite                 | Japan power cord  | NS-5XP-107 |
| Rack mount kit for 2 NetScreen-5XPs | NS-5XP-RMK        |            |

Please see [www.netscreen.com/products](http://www.netscreen.com/products) for the latest information and features of NetScreen's entire line of products.

## NetScreen product warranty and services

Every NetScreen product includes standard warranty features that assure the customer can deploy them confidently. E-mail based technical assistance is available on NetScreen appliances, systems and management products for one year. Hardware products come with a full year of standard RMA coverage in the unlikely event of failure. Both hardware and software products come with a short-term software service that provides any software feature releases or maintenance releases within 90 days of purchase.

For more information about NetScreen services or products, please call toll-free **1-800-638-8296** in the US, **+44 8700 750000** in Europe, or **852-2202-5800** in Hong Kong, or visit us at [www.netscreen.com](http://www.netscreen.com).